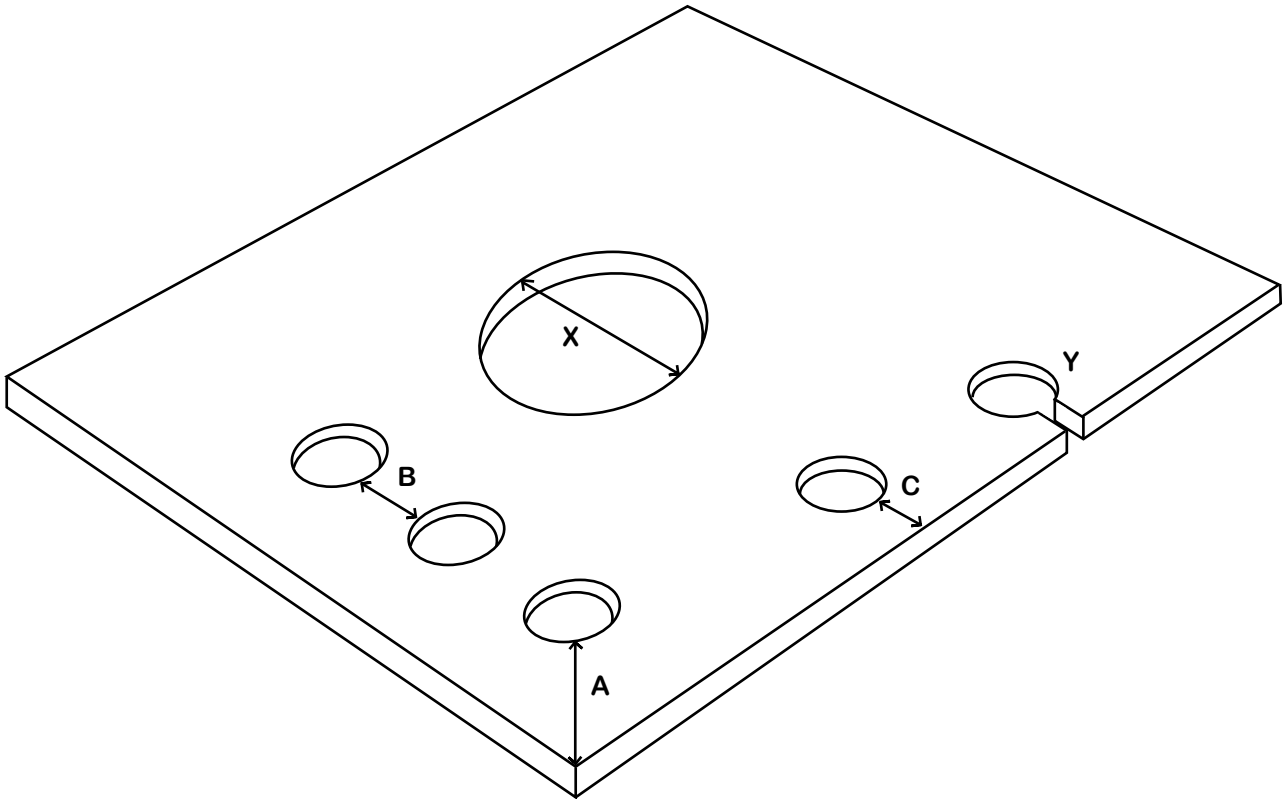


Hole Guidelines For Toughening



*Distance between holes must be at least 4 x the thickness of the glass.
(Refer B dimension)

*Diameter of holes must not be greater than 33% of the panel measurement at the narrowest point.
(Refer X dimension)

*Distance from edge of hole corner must be 4x glass thickness.
(Refer A dimension)

*If a hole is placed in position closer than the recommended distances, a saw cut can be made to minimise the stresses and chances of breakage.
(Refer Y dimension)

*Distance from edge of hole to edge of glass must be at least 1.5 x thickness
4-6mm glass or 2 x thickness
8-15mm glass.
(Refer C dimension)

*Hole diameter must be equal to, or greater than the glass thickness.
(Refer X dimension)